

The Flecte Project

UNIQUE, HIGH PERFORMANCE MACHINES
FOR COLD TUBE DEFORMATION.

Flecte's technical staff have decades of experience in the tube bending sector. Together with our modern systems of production, reliability and quality is guaranteed.

The word "Flecte" is Latin for "to bend".

Our story never follows a straight line. Sometimes it is necessary to turn, "to bend". Our team has done just that. Starting from what we know best, bending metal, we are forging a new path with the birth of the **Flecte Project**.

Collaboration with RbSA Industrial to integrate BendPro G2 control system with the quality design and manufacture of the Flecte line of CNC tubing benders creates a beautifully designed and functional product.

Seamlessly integrate FlectePro CNC Tubing Benders into your manufacturing process today!

Flecte *PRO*
by RbSA *INDUSTRIAL*

Find us on Social Media:



Flecte *PRO*
by RbSA *INDUSTRIAL*

A series of CNC Tubing Benders, unique in their kind, with high performance levels at a highly competitive market price.



Robinson Bender Services and Automation, Inc
701 New Highway 68
Sweetwater, TN 37874

Phone: 865-498-3508
info@rbsaindustrial.com
www.rbsaindustrial.com
Www.flectepro.com

RbSA
INDUSTRIAL

Flecte *PRO*
by RbSA *INDUSTRIAL*

Complete Line of
CNC Tubing Benders



Italian Design

American Ingenuity

Unrivalled Support

Tel: 865-498-3508



PRO259 Built for Automation

With 9 Electric Axes, multiple tool stacks, a bend head that will drop completely below the path of the carriage, and lightening fast operation, the PRO259 is uniquely designed to support automated bending cells with tubing sizes up to 1.0 inch OD.



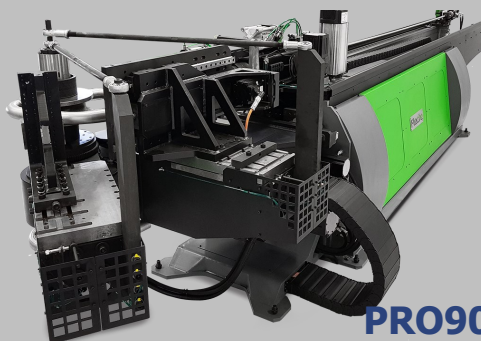
PRO45x Hybrid or All Electric

The PRO45x is a series of hybrid CNC tubing benders available with 3, 4, 5, or 6 electric servo axes combined with hydraulic clamping, or for ultimate control choose the PRO4510 All Electric model with 10 servo axes to manufacture complex and difficult to bend parts up to 1.75 inch OD.



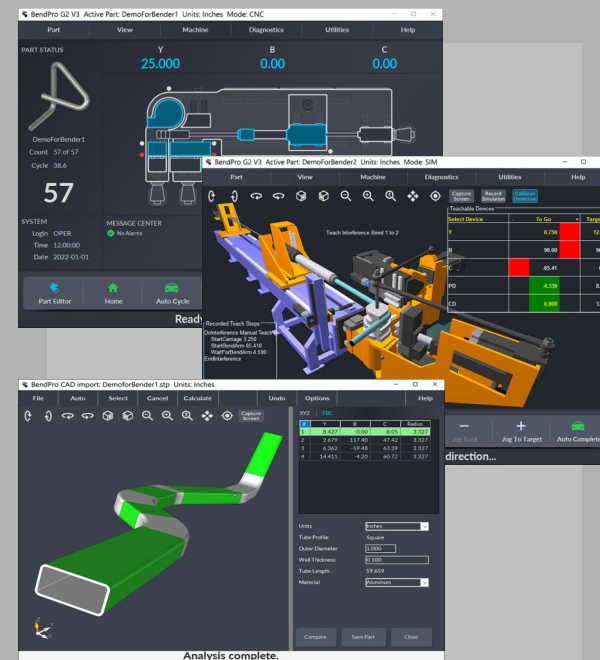
PRO65x Hybrid or All Electric

2.5 Inch OD Capacity bending with 3, 4, 5, or 6 electric servo axis models available the PRO65x series of benders are incredibly capable and durable machines. This mid-size offering is the perfect choice across multiple industries. From automotive to aerospace, the PRO65x series of CNC tubing benders is a perfect choice for high volume manufacturing.



PRO90x Hybrid or All Electric

The PRO90x series of benders is available in hybrid or all electric configurations with up to 10 electric servo axis. The 3.5 inch OD capacity is perfect for automotive, aerospace, or marine exhaust applications, as well as many other industries requiring a high precision yet powerful CNC tube bending machine.



BendPro G2

BendPro G2 from Current Tech is the most popular bending software in the world, allowing tube bending manufacturers to standardize their CNC bender HMI across the production floor.

Utilizing rugged and reliable hardware available worldwide, the BendPro control system assures years of reliable performance and long term support. With technicians available across multiple US time zones as well as overseas, you can rest easy knowing online support is readily available.

Standard FlectePro Features:

- Independent Bend Die simplifies interference moves between bends
- Carriage Boost for tight radius bending
- Roll Bend Capable Mechanics (requires purchase of software option)
- Wifi Adapter Included
- Safety Guarding and floor scanner on most models

Available Options (Partial List):

- Machines can be produced in right or left hand version
- Tube geometry import from most CAD programs (SolidWorks, AutoCAD, Etc.)
- Machine Simulation
- Offline programming and simulation software
- Automated Cell Integration



Have a need for a custom tube bending application? Let us bring your ideas to life!